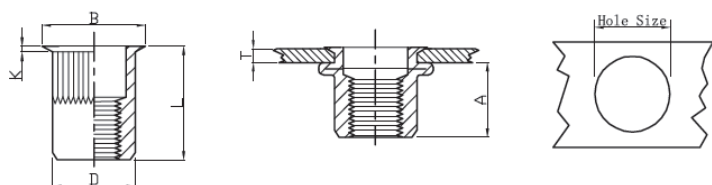


KTRZ TESTA RIDOTTA CORPO CILINDRICO ZIGRINATO FILETTO IN POLLICI RH-KB-UK REDUCED HEAD KNURLED BODY

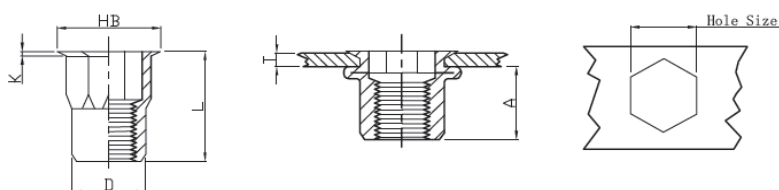


(MATERIALE DISPONIBILE SOLO SU RICHIESTA / ONLY ON DEMAND)

Unit: mm

THREAD	P/N	LD P/N	T (grip range) Min Max	A Ref	Hole size +0.10	D ±0.05 (*+0.07-0.1)	B +/-0,3	K +/-0,2	L +/-0,3
M3	RH-KB-UK-0315	KTRZM3C1P	0.5-1.5	5,5	4,8	4,65	5,4	0,4	9,0
M4	RH-KB-UK-0420	KTRZM4C1P	0.5-2.0	6,5	6,5	6,35	7,0	0,5	10,5
M5	RH-KB-UK-0525	KTRZM5C1P	0.5-2.5	7,5	7,25	7,15	7,85	0,5	12,0
M6	RH-KB-UK-0630	KTRZM6C1P	1.0-3.0	9,2	9,6	9,45	10,3	0,6	15,0
M8	RH-KB-UK-0835	KTRZM8C1P	1.0-3.5	10,5	10,6	10,45	11,3	0,6	16,0
M10	RH-KB-UK-1040(13H)	KTRZM10C1P/13	1.0-4.0	12,8	12,8	12,65	13,8	0,65	20,0

KTRSE TESTA RIDOTTA CORPO SEMI-ESAGONALE FILETTO IN POLLICI RHH-IHB-UK REDUCED HEX HEAD INNER-HEX BODY-UK



Unit: mm

THREAD	P/N	LD P/N	T (grip range) Min Max	A Ref	Hole size +0.10	D ±0.05 (*±0.08)	HB +/-0,3	K +/-0,2	L +/-0,3
M4	RHH-IHB-UK-0420	KTRSEM4C1P	0.5-2.0	6,5	6,4	6,25	7,25	0,5	10,5
M5	RHH-IHB-UK-0525	KTRSEM5C1P	0.5-2.5	7,5	7,2	7,05	8,1	0,5	12,0
M6	RHH-IHB-UK-0630	KTRSEM6C1P	1.0-3.0	9,2	9,6	9,45	10,5	0,6	15,0
M8	RHH-IHB-UK-0835	KTRSEM8C1P	1.0-3.5	10,5	10,6	10,45	11,5	0,65	16,5